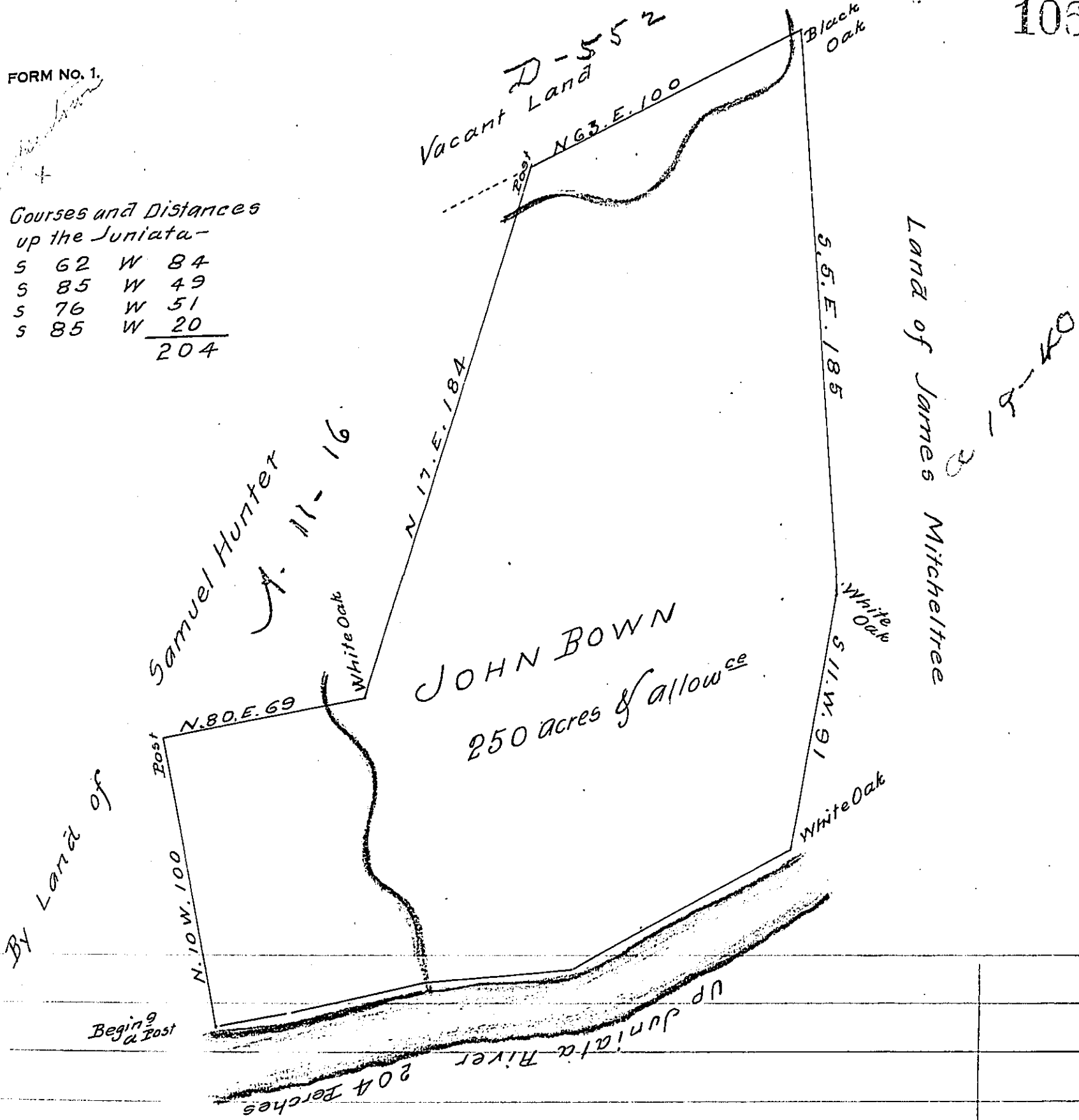


FORM NO. 1.

Courses and Distances
up the Juniata-

S	62	W	84
S	85	W	49
S	76	W	51
S	85	W	20
			204



The Draught of a Tract of Land situate on Delaware Run on the North side of Juniata - in the County of Cumberland containing Two hundred and Fifty acres and the usual allowance of six acres p Cent for roads &c^s Surveyed to John Bown the 23^d of April 1765 in pursuance of a Warrant from the Honble the Proprietaries bearing date at Philad^a the 14th day of March 1755

W^m Maclay Dept^y Surv^r

To John Lukens Esq^r Surv^r Gen^l
of the Province of Pennsylvania
250.4

IN TESTIMONY that the above is a copy of the original remaining on file in the Department of Internal Affairs of Pennsylvania, made comformably to an Act of Assembly approved the 16th day of February 1833, I have hereunto set my hand and caused the Seal of said Department to be affixed at Harrisburg, this eleventh day of September 1907

Henry Hoover
Secretary of Internal Affairs.